

LESS
doubt

—



MORE
certainty

+

MORE than a test

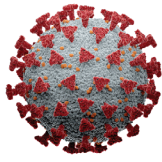
Xpert® Xpress CoV-2/Flu/RSV *plus*®
& Xpert Xpress CoV-2 *plus*®

When you need to know if it's the flu, COVID-19, or RSV, choose a testing duo that delivers enhanced gene coverage, plus the option of multiplex viral detection.

Coverage, plus
Accuracy, plus
Peace of mind

That's the **PCR_{plus}** advantage.
From Cepheid.

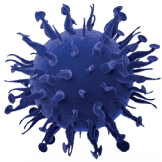
Visit www.cepheid.com/coronavirus



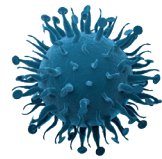
SARS-CoV-2



Flu A



Flu B



RSV

Coverage, plus

Viruses constantly change through mutation, and these mutations can give rise to new variants with unique characteristics. Cepheid has proactively addressed this increasing diversity by **enhancing gene coverage**.

The Xpert® **Xpress** CoV-2/Flu/RSV **plus** & **NEW** Xpert **Xpress** CoV-2 **plus** tests provide a third gene target for SARS-CoV-2 as well as an optimization of nucleocapsid gene probes to enable more reliable virus detection.

Xpert® **Xpress** CoV-2 **plus** —

Xpert® **Xpress** CoV-2/Flu/RSV **plus** —

Gene Targets

SARS-CoV-2

RdRP RNA-dependent RNA polymerase gene

E Envelope protein gene

N2 Nucleocapsid gene

Flu A

M Matrix gene

PB2 polymerase basic protein 2 gene

PA polymerase acidic protein gene

Flu B

M Matrix gene

NS non-structural protein gene

RSV

RSV A Nucleocapsid gene

RSV B Nucleocapsid gene

Accuracy, plus

In the Xpert **Xpress** CoV-2/Flu/RSV **plus** & **NEW** Xpert **Xpress** CoV-2 **plus** tests, the addition of primer/probe sets for the detection of a third SARS-CoV-2 target, RdRP, will add further **redundancy for greater confidence in detection**.

Additionally, in the Xpert **Xpress** CoV-2/Flu/RSV **plus** test, Flu and RSV detection is achieved through comprehensive design across seven unique and independent targets to ensure optimum coverage and to mitigate the effects of seasonal antigenic shift and drift.

Peace of mind

Molecular methods targeting **multiple gene targets** within the viral genome allow for more reliable detection of strains undergoing genetic variation.[^]

The Xpert **Xpress** CoV-2/Flu/RSV **plus** & **NEW** Xpert **Xpress** CoV-2 **plus** tests have been designed to give healthcare providers **confidence in results and decisions**.

Choose the **PCR_{plus}** advantage.
Get **MORE** than results.

* These products have not been FDA cleared or approved, but have been authorized by FDA under an EUA for use by authorized laboratories; Xpert **Xpress** CoV-2 **plus** has been authorized only for the detection of nucleic acid from SARS-CoV-2, not for any other viruses or pathogens; Xpert **Xpress** CoV-2/Flu/RSV **plus** has been authorized only for the simultaneous qualitative detection and differentiation of nucleic acids from SARS-CoV-2, influenza A, influenza B, and respiratory syncytial virus (RSV), and not for any other viruses or pathogens. The emergency use of these products is only authorized for the duration of the declaration that circumstances exist justifying the authorization of emergency use of *in vitro* diagnostics for detection and/or diagnosis of COVID-19 under Section 564(b)(1) of the Federal Food, Drug and Cosmetic Act, 21 U.S.C. § 360bbb-3(b)(1), unless the declaration is terminated or authorization is revoked sooner.

[^] "Tests with multiple targets are more likely to continue to perform as described in the test's labeling as new variants emerge. Multiple targets means that a molecular test is designed to detect more than one section of the SARS-CoV-2 genome." <https://www.fda.gov/medical-devices/coronavirus-covid-19-and-medical-devices/sars-cov-2-viral-mutations-impact-covid-19-tests>

CORPORATE HEADQUARTERS

904 Caribbean Drive
Sunnyvale, CA 94089 USA

TOLL FREE +1.888.336.2743
PHONE +1.408.541.4191
FAX +1.408.541.4192

EUROPEAN HEADQUARTERS

Vira Soleih
81470 Maurens-Scopont France

PHONE +33.563.82.53.00
FAX +33.563.82.53.01
EMAIL cepheid@cepheideurope.fr

www.Cepheid.com

© 2022 Cepheid 0896-02